

Lashlift



Keratin Lash Lift Set - First & Second Pro System

Tube Type - First/Second Pro System: 30gX2 pcs
No. 8001027460



Sachet Type - First/Second Pro: 1g X 10 pcs
No. 8001027463



Keratin Lash Lift - First Pro System (30g tube)
No. 8001027461



Keratin Lash Lift - Second Pro System(30g tube)
No. 8001027462



Glue



Clear Glue



5ml / Brush Applicator
No. 8001017654



Clear Glue Pro



5ml / Brush Applicator
No. 8001025364



Amino Gel Glue



8g / Glue
No. 8001021801



Fixing Balm



20g / Glue
No. 8001026792

Rod



Standard Shields



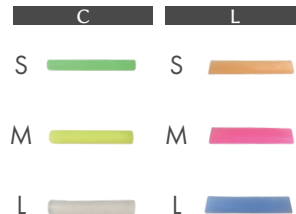
8 size set No. 8001023523



Multi Silicon Rod No.1 - No.14



14 types of flexible silicon rods in various sizes



Treatment



BASE Control



20ml / Pre-treatment
No. 8001026765



AC Control



20ml / Mid-treatment
No. 8001026766



Control Serum K



9ml / Treatment
No. 8001026767



Control Serum Z



9ml / Treatment
No. 8001026768

Foula Store

High quality, innovative & Cruelty-free lash supplies from Japan.

- LASH EXTENSIONS
- LASH LIFT
- ADHESIVES
- REMOVERS
- PRIMERS
- CLEANSERS
- COATING
- SERUMS
- TAPES
- KITS
- TEXT BOOKS
- ACCESSORIES



Over 3000 products
- Largest selection of products in the industry!

SEE ALL OUR PRODUCTS HERE



SHOP



FOLLOW US
@FOULASTOREMIDDLEEAST
& TAG US #FOULALASHES



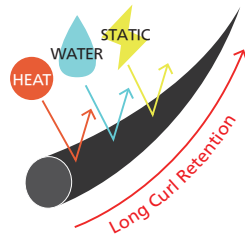
WhatsApp
+8180-73172002

✉ info@foula-store.ae

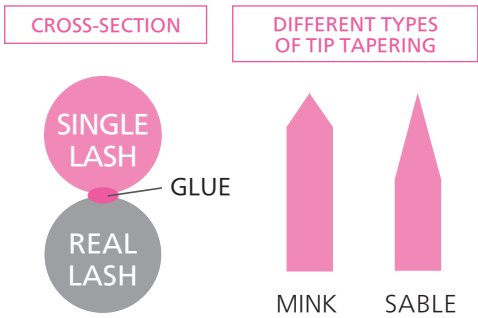
ABOUT FOULA EYELASH EXTENSIONS

Extensions that blend into your eyelashes without any discomfort.

All Foula Extensions are made from PBT (Polybutylene terephthalate). PBT has high thermal stability, anti-static properties and high chemical resistance. Each extension is hand made by craftsman, and goes under strict quality inspection and control before it is ready for sale.



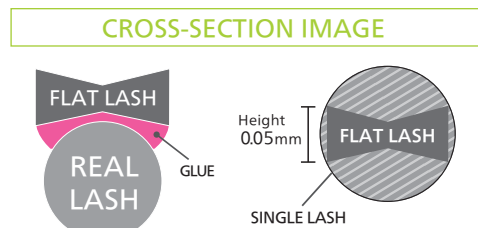
Single Lash



One eyelash extension is attached to one natural eyelash. The cross-section is mainly circular, and the softness changes depending on the depth and shape of tapering at the tip of the extensions.



Flat Lash

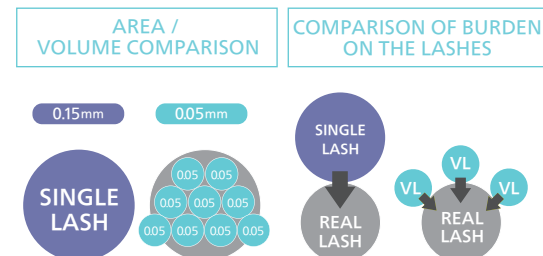


※If the Flat Lash thickness is 0.20mm, the height is 0.06mm

Flat lashes have a concave type of shape in the center, which increases the adhesive surface coverage between extensions and the natural eyelashes. These extensions fit perfectly on the natural eyelashes and improve the stability and retention of the lashes. Compared to Single lashes, these are lighter and have less burden on the natural eyelashes.



Volume Lash



1 Single Lash (0.15mm) = 9 Volume Lashes (0.05mm)

Around three to five eyelash extensions are attached to one natural eyelash. There are two types of volume lashes; Hand-made and Pre-made. The supple softness and lightness of the extensions make you forget that you have any extensions on your lashes.



BEST SELLERS

Adhesives

1 EXTRA BOND GLUE
No. 8001024456

2 Ethyl Pro Adhesive
No. 8001009937

3 LED glue clear
No. 8001027331

1 MOIST REMOVER Hybrid Gel Type
No. 8001027370

2 LED REMOVER
No. 8001027332

3 MOIST REMOVER PERFUME -Adhesive Remover(Cream)- 20g
No. 8001026052

Tweezers

1 Standard Tweezer- Small Curved Tip
No. 8001024653

2 Standard Tweezer - Hook Angle
No. 1002001372

3 Standard Tweezer - Straight
No. 1002001374

Aftercare

1 Re:act Lash Serum
No. 8001024468

2 Lash Fixer
No. 8001022747

3 Lash Coating with Serum
No. 1104000631